



Features:

- Space saving design only 0.67”(17mm) deep
- Occupies less than 2.5 x 1.1 inches of front panel space
- Choose a red or green LED

- 3-1/2 digits with 0.56” LED
- Window mount with optional bezel
- User Selectable Decimal Points

Specifications:

Display	
Digits	3½ (±1999 count)
Type	7-segment LED (red or green)
Digit Height	.56in (14.2mm)
Polarity Indication	Automatic “-” for neg input
Decimal Point	3 position selectable
Overrange Indication	1--- for positive, -1--- for negative
Other Features/Options	Display hold function
Signal Inputs	
Configuration	Bipolar, differential
Full-Scale Input	±200mV, ±2V, ±20V
Input Offset Adjustment	Auto zero
Input Impedance	>100MΩ (±200mV), 1MΩ (other ranges)
Common Mode Range	±1VDC
Common Mode Rejection	>86dB
Overrange Protection	±350VDC (±100 VDC for 200mV range)
Input Bias Current	1pA typical, 100pA max
Control Inputs	Decimal point select, hold, span adjust trimpot
Performance	
Sampling Rate	3.3 readings/s
Accuracy	±(0.1% + 2 counts) typ ±(0.2% + 2 counts) max
Warmup, typical	10 min
Temperature Drift, typical	100 ppm/°C
Power Supply Requirements	
Supply Voltage	+5VDC ±5%
Supply Current, typical	200mA
Physical	
Package Style	Window mount
Dimensions	2.52 x 1.10 x .73
Panel Cutout	2.05 x .81
Weight	0.7oz (20g)
Connector	J1C-10 (10-pin) optional
Bezel	Optional, see diagram
Environmental Requirements	
Operating Temperature	0 to 50°C
Storage Temperature	-10 to 60°C
Relative Humidity	0 to 95% non-condensing

Ordering Information:

DMO-3*HR.....Red LED DPM, Differential Input

DMO-3*GGreen LED DPM, Differential Input.....

Complete part number by filling in * with the desired range:
(5=200mV range, 6=2V range, 7=20V range)

LED-BBezel Mounting Kit For DMO-3* Series

J1C10.....10 Pin Connector / Wire Assembly

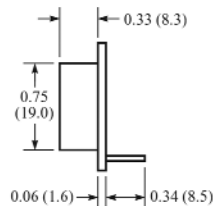
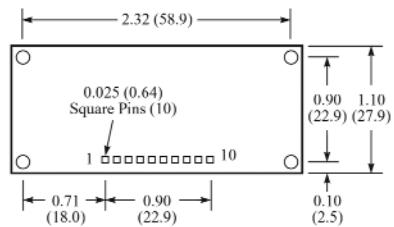
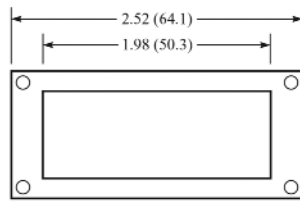
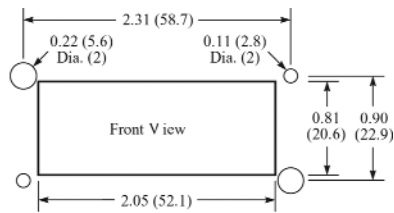
PW2-5.....Regulated 120V AC to 5V DC Power Supply

PW2-12Regulated 120V AC to 12V DC Power Supply

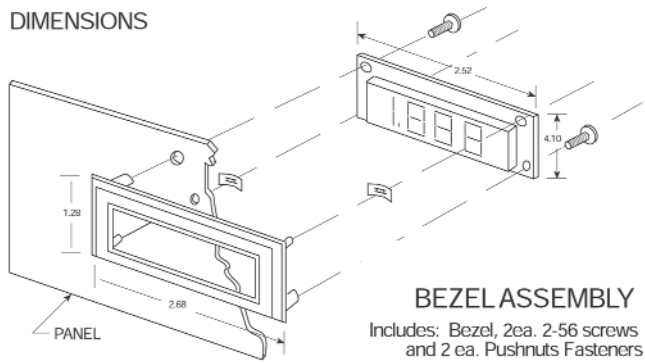
PW2-24Regulated 120V AC to 24V DC Power Supply



Dimensions



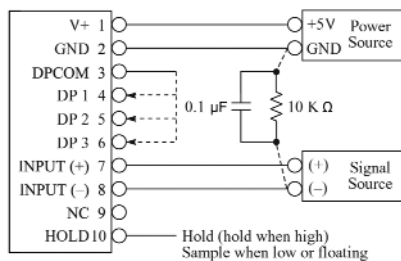
DIMENSIONS



BEZEL ASSEMBLY

Includes: Bezel, 2ea. 2-56 screws and 2 ea. Pushnuts Fasteners

Wiring



Pin No.	Pin Name	Description
1	V+	+5V power supply
2	GND	Power supply ground
3	DP COM	Decimal point return
4	DP1	1XX.X (connect to DP COM to turn on)
5	DP2	1X.XX (connect to DP COM to turn on)
6	DP3	1.XXX (connect to DP COM to turn on)
7	INPUT(+)	Positive input signal
8	INPUT(-)	Negative input signal
9	NC	No connection required
10	HOLD	Hold last display